



Before you start:

Effective with Version 6.95, you must be using Weather **Display Version 10.37R Build 307 or greater!** The alternative dashboard I have created is a replacement for the one that comes with a **VERSION 3** package called PHP/AJAX Website Template Set from Saratoga-weather.org. It is important to understand how these scripts work. A PHP web page is a static page that is updated only when loaded. With the addition of the AJAX, the page is loaded as normal but then the AJAX (java script) begins running and it can update certain parts of the page that has been specially coded to allow this. So again, you have two separate parts of the page; the initial load and the updates. Please make note of that for future debugging. If it loaded correctly at the beginning and then failed to update correctly, the problem is in the java, if it loaded wrong then corrected itself, the problem is in the PHP. And lastly, please do read this. 90% of all questions I get are answered in these few pages.

Requirements:

1. You must already have the PHP/AJAX Website Template from Saratoga-weather.org (**Version 3 or later**) running on your site with no errors. I've provided a link to Ken True's great site to download it! Do not attempt to change over to this script before that is done.

<http://saratoga-weather.org/wxtemplates/install.php>

2. You must be running **testtags.txt version 1.07 or greater** to start with. If you do not have that version, a copy of it is included in the archive file. This file goes in your weather display directory on your LOCAL DISK DRIVE, not on the hosting site. You will find it in a directory like: c:\wdisplay\webfiles. It may be found in the USER folder on Vista and Windows 7/8.
3. Read through the options of this alternative dashboard before beginning, you will have to decide which options will work on your system and which additional files you may need to download before beginning. This dashboard is designed to allow the user to select images from multiple different sources and even some options from different sources. **These files will NOT be part of the archive**. You will need to download them separately. I have tried to indicate where to find these files when possible but it is up to you to get them.
4. This current version will work with all version 6.xx version of alternative dashboard. It will require some modifications if upgrading from previous versions.
5. **MOST IMPORTANT NOTICE:** Alternative dashboard **REQUIRES** a special version of **ajaxWDwx.js**. This is the java file that does the updates. See Box section on next page for instructions on how to change your [settings-weather.php](#) file to work with this version.

You MUST modify your [Settings-weather.php](#) file to point to the new ajaxWDwx3.js file.

If you do not it will not work correctly! Here is what you need to change:

```
#-----  
# required settings for Weather-Display software  
#-----  
  
$SITE['WXtags'] = 'testtags.php'; // for weather variables .. we're using the old name instead  
of WDtags.php  
$SITE['ajaxScript'] = 'ajaxWDwx3.js'; // for AJAX enabled display
```

^

MUST ADD THE NUMBER 3 --| To the ajaxWDwx file name here

6. This project is offered free of charge and with no guarantee of it working on your system. I try to help when I can and only through email or on www.wxforum.net

Setup Instructions:

1. **Make a backup copy of your current setup.** Most important, re-name your current ajax-dashboard.php. If anything goes wrong you will need a backup or at least that file to get back to your old version again.
2. Unzip the archive and copy the files ajax-dashboard6.php, ajaxWDwx3.js and AltAjaxDashboardConfig6.php from the archive to your website.
3. Using notepad.exe (never use any word processor like word or excel to open and edit these files), edit AltAjaxDashboardConfig6.php. See next section of this documentation for images and instructions on how to edit these files and what the various selections do.
4. The images included in this file should be placed in the directory your Ajax images are in. The fire weather jpg images are white background, the gif's are transparent. There is a separate set of images for the Chandler Burning Index option; you should use those if you have the Chandler option on. The default FWI images are the jpg images, if you change to the gif, you MUST modify the code. Search for Fire0.jpg for the area to change.
5. Again, using notepad.exe, edit the testtags.txt (version 1.07 or later ONLY) and add the additional testtags included in the archive with names that indicate testtags in the name. There may be more than one in the archive. All additions must be at the end of the file but above the last two lines as shown below:

```
$firstsnowseasonav='%firstsnowseasonav%';
```

```
// end of testtags.txt/testtags.php
```

```
?>
```

← Add any additional Tags here

← Add Nothing after these last two lines.

The following are links to many requested images and additions for the dashboard. Please note that I do not support these files, they are created by others who have allowed us to use them. Please read their requirements for use (if any) before using them.

<http://meteokar.gr/ajax-images/Fire0.gif> (series of about 6 images)

<http://meteokar.gr/ajax-images/sun.jpg> (I've attached the image here)

<http://meteokar.gr/ajax-images/moon/w/NH-moon14.gif> (see below)

<http://www.bashewa.com/downloads/bws-icons-moon.zip> (Full set of moon icons)

<http://www.bashewa.com/download/bws-icons-uv.zip> (UV Icons)

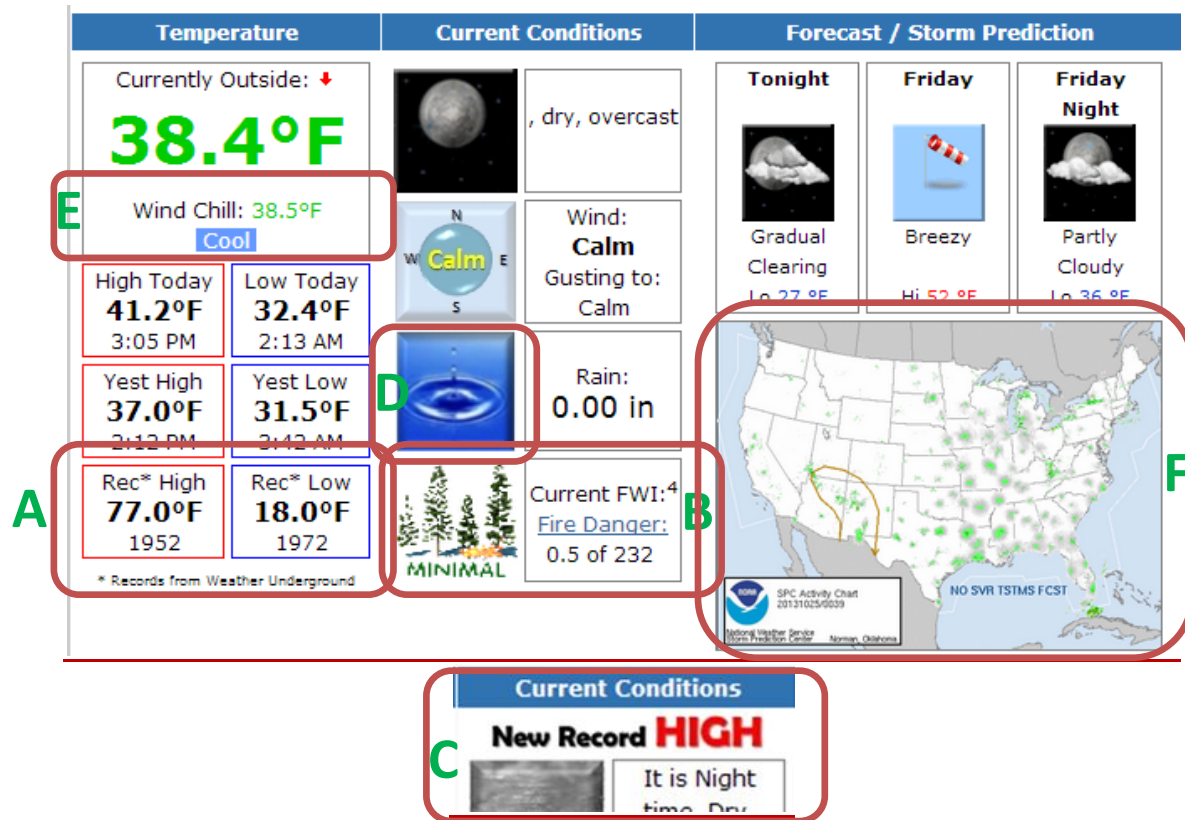
<http://saratoga-weather.org/scripts-atom.php#atomtopwarn> (Alerts I use at top of my pages)

I will continue to add more links as I find them again. I also have many images that I created on my scripts and images download site where you found the archive. You may download from there too!

<http://www.Burnsvilleweatherlive.com/wxScripts.php>

The Config File Settings: (altAjaxDashboardConfig6.php)

Row 1 has SIX possible settings to choose from. They are:



A – Station Record High/Low or Weather-Underground Record High/Low.

In the config file you will need to set which high/lows you want to display using the **\$useSTAhilo** = true for Station Highs/Lows if you have a minimum of TWO YEARS of data available and set to false for Weather Underground Highs/Lows.

In the config file you will need to set the year your high/lows start at using the

\$SstartYr = '2007';

NOTE: You must have 2 years worth of data for station high/lows to work. If you don't you will need to use Weather Underground data and set \$useSTAhilo to false

B – Fire Index Display Method.

In the config file you will set Fire Index Method using the following two settings:

\$useFWI = false

\$useCBI = true

If you use FWI there is a link to a FWI page that you can add to your site. The link to the discussion on that script is: <http://www.wxforum.net/index.php?topic=18814.0> NOTE: Only one of the two may be TRUE, and one (or both for neither) must be FALSE!

C – Record High/Low ICONS

If you use Weather Underground you can display a notice if your temperatures are higher or lower than the record high/low for the day from WU (Official Record). If you want Station Records shown, you can do so as well (Station Record) or use BOTH or NONE. The icon Record Image will display above the current condition icons as shown in the small image above. In the config file you will need to set the following:

\$useORHL = true <For OFFICAL RECORD HIGH/LOW NOTE: If you do not have 2 years worth of data, you MUST set this to true!

\$useSRHL = true <For STATION RECORD HIGH/LOW NOTE: Not recommended if under 5 years worth of data!

D – Rain/Snow Image.

Rain snow image is determined by the wetbulb temperature. If your snow measurement is in inches it will change at 32F if in CM then it will change at 0C. If you find that it is always showing snow, your snow unit of measurement is in “INCHES” when it should be “CM”

E – Feels Like and/or Wind Chill/Heat Index.

Some people didn't like the Feels like temperature and wanted to use more standard readings like Wind Chill and Heat Index. I've made it so you can choose either or both now or even neither! – Note: It will only display if there is more than 2 degrees difference from the current temperature.

\$useFL = true <For Feels like

\$useHC = true <For Heat Index and Wind Chill.

F – Storm Prediction Animated Image.

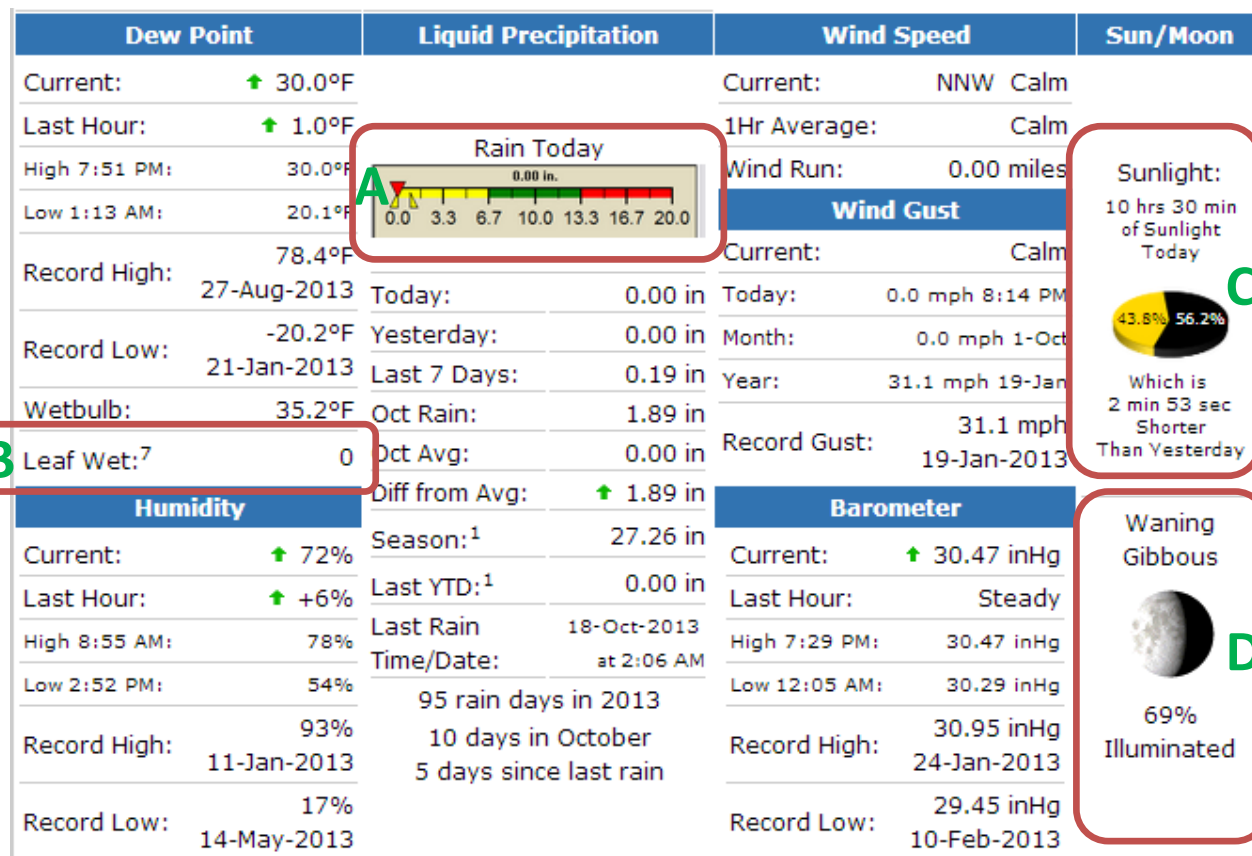
The Storm Prediction image is from the US National Weather Service and is only available to US stations though there are the same type of images available from just about every country, you just have to look for it. In the config file, you can change the image by plugging in the URL of the image you want there, it could be anything! It will resize to fit the spot.

\$spc_image = 'http://www.spc.noaa.gov/products/activity_loop.gif'

\$spc_url = 'http://www.spc.noaa.gov/';

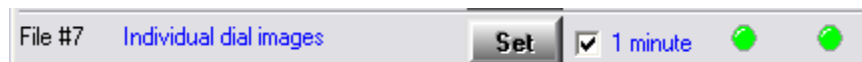
Be sure that the link for the image is the actual image URL, not to the page. The image is clickable and can go to any page you like, either on your site or another. (Always get permission to link to someone site before linking though, it's just the right thing to do.)

Row 2 & 3 has FIVE settings to choose from:



A – Rain Gage Graphic.

Weather Display creates some basic graphics for rain; I've added the ability to include ANY graphic here. It's my plan to use JGraphics or something similar in the future to do up a nice rain graphic but in the mean time, it's here. To use it you must have File #7 on customize internet and file creation setup screen to upload. Note any image used with be re-sized to 178 pixels in width to match the column width.



Or if you don't need the image updated every minute and can live with it updating with all the other stuff every few minutes, by going to 'Control Panel', 'Web Files/Web Page Real Time FTP/WDL' and 'Web Files Setup #1'. If you stretch that window down, you will find additional options. Namely, under 'Individual Dial Images' -- check both 'Produce individual dial image files' and 'Upload these individual dial image files' Don't do both!!

Individual Dial Images	
<input checked="" type="checkbox"/>	Produce individual dial image files
<input checked="" type="checkbox"/>	Upload these individual dial image files
<input type="checkbox"/>	Upload the wind dials only when uploading the individual dials
Animated Gif	
<input type="checkbox"/>	Animate the screen shot image (last 6 minutes, 1 minute interval reco

\$useRainGraph = true;

\$RainGraphImage = 'raintoday.gif' ← This is normally placed by WD in the same folder as your testtags.php

B – Leaf Wetness.

If you have a Leaf Wetness Sensor, you can display the value in the Precipitation section by setting the **\$useLEAF = true** in the setting file.

C – Solar Image.

You have the option to display the sunlight hours in a pie graph or just a sun image with text. Use the following setting to select:

\$useSunlightPie = true; // Use Sunlight Pie Chart from Steve Fitzgerald and Jerry Wilkins
\$useSymSPC = true; // When true, the top and bottom of the Sunlight Pie Chart grow and shrink.
 When false only the top grows and shrinks.

D – Moon Images.

Moon pictures x28: <http://www.bashewa.com/downloads/bws-icons-moon.zip> (188kb)

E – (Shown below) Rain History add-in module.

Oct to Date Avg: ¹⁰	0.00 in	YTD Avg: ¹¹	0.00 in
Oct to Date Diff from Avg: ¹⁰	↑ 1.89 in	YTD Diff from Avg: ¹¹	↑ 27.26 in

You can choose to add in a section of code to display historical rainfall data. This add-in module is available from Murry Conarro. You add the script to your site, upload it to the host and set the config file to true (as shown below) and these values will display in the rain section. (Note, in my images, I don't have even a year of data so it looks funny in my sample shots) You can find the information on getting the add-in here:

www.weather-watch.com/smf/index.php/topic,45144.0.html

To use the script, make the following true:

\$use_historical = false; // historical rain fall

Row 4 & 5 has FOUR possible setting to choose from. They are:

Heating Degree Days		Snow ³		Wind Chill		Air	
Today:	22.7	Today:	0.00 in	Current:	55.6°F	<div>Quality Index⁶: 31</div> <div><div>GOOD</div><div>0-50</div></div> <div>Density: 1.231 kg/m³</div>	
Oct:	391.8	Yesterday:	0.00 in	Low 7:37 AM:	28.6°F		
2013 to Date:	5616.5	Oct Snow:	→ 0.00 in	Yesterday:	32.3°F		
Cooling Degree Days		Oct Avg:	0.00 in	Record:	-31.4°F		
2013 to Date:	749.4	Diff from Avg:	0.00 in	21-Jan-2013			
Current UV Index		Season Total: ²	0.00 in	Current Solar Energy ⁹			
<div>A</div> <div>0</div> <div>Sunburn in NONE Minutes</div> <div><div>UV INDEX</div><div>0</div></div> <div>Highest: 1:10 PM 2.2</div>		Snow Depth:	0.00 in	<div>C</div> <div>0 W/m²</div> <div>0%</div> <div>W/m² → SI</div> <div><div>Solar INDEX</div><div>0</div></div> <div>High Today: 1:34 PM 591 W/m² Record: 1083 W/m²</div>			
		0 snow days in October					
		0 snow days this season. ²					
		First Snow of Season: 1-Jul-2013					
		Average 1st Snow: 03 of December					

A – UV Forecast or Current Readings.

In Setting.php you set UV to true if you have a UV sensor on your station. If you do, this will display UV reading during the day and todays high UV and UV Forecast at night.

B – Snow, Lightning or Tide WITH Lightning Over-ride.

In the config file you will need to set either snow readings or lightning reading you want to display using the following config options:



- \$useLIGHT = true;** Set to true to show lightning when no snow on the ground.
(if true, Lightning will over-ride TIDE display if more then \$minLcnt (set below) is reached in 5 mins)
- \$useSNOW = true;** Normally always TRUE unless you want TIDE to Display.
SNOW & TIDE CANNOT BE BOTH TRUE!!!
Snow over-rides lightning section if snow on ground.
- \$useTIDE = false;** Set to True to display TIDE information.
Lightning will over-ride Tide.
SNOW & TIDE CANNOT BE BOTH TRUE!!!

(Setting all three to false will cause a blank section with "Coming Soon" for a header)

\$S3C2 = '4';

Over-ride status: If Lightning is TRUE, this allows Lightning to over-ride either Tide or Snow.

Set as follows:

0 = None Shows (All three previous setting are FALSE)

1 = Just Snow No Lightning over-ride (Snow must be set to TRUE)

2 = Just Tide No Lightning over-ride (Tide must be set to TRUE)

3 = Just Lightning (Lightning must be set to TRUE)

4 = Snow with Lightning Over-ride (SNOW and LIGHTNING must be TRUE)

5 = Tide with Lightning Over-ride (TIDE and LIGHTNING must be TRUE)

WARNING: IF YOU SET ALL THREE TO TRUE, YOU WILL HAVE ONE SCREWED UP DISPLAY!

This module will display lightning counts from either the 1-wire lightning detection system or the NexStorm system. The Last minute strikes will be updated with the Ajax updates as will the last strike date and time if you use the modified java script file included. (Will NOT work if you don't have a lightning detector)

Snow will display in Season AUTOMATICALLY, if there is snow on the ground from your manual input. The system will default to showing lightning or tide otherwise.

C – Solar Summary.

In Settings.php you need to set Solar to true if you have a solar sensor on your station. If you do this. Solar ICONS will display during daylight hours and solar history and today's high at night. If no solar, it will only display daily solar history. You can also select to use Switchable SI or Wm²

\$haveSolar = true; // set to false if no Solar sensor

\$useSISwitch = true; // set to false if no SI switching is desired

\$useWM2SI = true; // set to false to use solar percent as default SI

D – Air.

This section will display Air Quality Index (AQI) and Air Density. The AQI is enabled through an RSS feed from a script by Michael at RelayWeather.com. Read all about it on the WD forum at: <http://www.weather-watch.com/smf/index.php/topic,46407.75.html> and Michael's site at: <http://www.relayweather.com/downloads.php> You can choose to not use AQI by setting the following option in the config file:

\$useAQI = false

Row 6 has FOUR possible setting to choose from. They are:

Soil Conditions ⁸	Irrigation Index ⁵	Station All Time Records	Cloud Level
A 4 in: 23 cb 43°F 10 in: 76 cb 45°F 18 in: 35 cb 47°F 36 in: 3 cb 52°F Growing conditions at the depth of: 4 in: Adequately Wet (11-25) Too Cold To Plant (< 50 F) Soil moisture range is from 0-Saturated to 200-Dry	B Updated at Midnight Current ET: 0.03 in 7-Days Rain: 0.00 in 7-Days ET: 0.43 in 7-Day: -0.433 in ↓ November: -0.73 in ↓ Support this Site! Your donation helps support this site Donate C 	HIGHS: 99.7°F LOWS: -28.8°F Jun-7-2011 Jan-21-2011 Daytime Records 93.4°F -16.2°F 18-Jul-2011 15-Jan-2009 Nitetime Records 84.7°F -20.6°F 01-Jul-2011 15-Jan-2009 ICN:3 ISS:Ok CON:4.7 RCP:91%	D

A – Soil Conditions or Almanac Section

This section is normally the Almanac Section but if you have Soil Temperature and Soil Moisture sensors, you can display up to 4 of each in this location. Add the measured Level and count of sensors in the config file. A separate Soil page is also available to display this in more detail. The required settings are:

```

$useSOIL = true;           // Set to true to display SOIL moisture.
$SOILcnt = '4';           // Set to number of soil moisture/temp sensor pairs in use (0-4)
$SOILlvl1 = '4';          // Set to the level of your first soil probe (shallowest)
$SOILlvl2 = '10';         // Set to the level of your second soil probe
$SOILlvl3 = '18';         // Set to the level of your third soil probe
$SOILlvl4 = '36';         // Set to the level of your fourth soil probe (Deepest)
$uomMoist = 'cb';         // Unit of measure for moisture in soil (cb or Kpa). Default is
                           // cb = centibar (Include space before)
$hideSM1 = false;        // Hide Soil Moisture #1 on display. Set to 'false' unless you
                           // don't have soil moisture but do have temp. There is one
                           // setting for probes 1-4
  
```

B – Irrigation Index, Snow, Donation Only or Blank (add your own code here too!).

This option REQUIRES that you have a solar sensor as the daily solar values are used to calculate the ET. Use of this index without solar would be way off and give false readings! It will NOT display if solar is not enabled. Options are:

\$useET = false (if true, ET will display with optional donation under it)
\$useBCH = true (if true the whole spot will be blank)
\$useSNOW2 = false (if true, over-rides snow in row 4 and lightning will display there)
\$useDNT = false (if true will cause only the PayPal Donation to display here)



WARNING: IF YOU SET MORE THEN ONE TO TRUE OR ALL TO FALSE, YOU WILL HAVE ONE SCREWED UP DISPLAY!

C – Support this Site!

This option **REQUIRES** that you have a PayPal account setup and you can access the account to download the code for your specific account's donation button. To enable this option, set the following in the config:

\$useDONATE = true; (note: set useDNT to true also to make whole section donate)

Here are the basic instructions for getting the code from **PayPal's website**.

Using the Button Creation Tool for a Basic Donate Button

To use the button creation tool for a basic Donate button:

1. Log in to your PayPal Premier or Business account at <https://www.paypal.com>.

The My Account Overview page opens.

2. Click the Profile subtab.

The Profile Summary page opens.

3. Under the Selling Preferences heading, click the Create new button link.

The Create PayPal payment button page opens.

4. In the Accept payments for dropdown menu, select "Donations".
5. (optional) In the Organization name/service text box, enter the purpose for the donation or the name of your organization. If you do not enter anything in this field, your donors can complete this field during checkout.
6. Scroll to the bottom of the page, and click the Create Button button.

The You are viewing your button code page opens.

7. Click the Select Code button on the Websites tab to select all of the generated HTML code.
8. Copy the text that you selected to the clipboard, by:
 - pressing Ctrl+C.

– or –

- right-clicking your mouse, and selecting Copy.
9. In your web editing tool, open the webpage where you want the button to be seen.

Important: Be sure that your tool is ready for you to paste HTML code, such as by switching to an HTML view from a design view of your webpage.

10. Paste the text that you copied from the clipboard onto your webpage where you want the button to appear, by:
- pressing Ctrl+V.

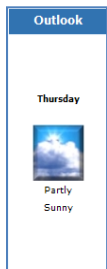
– or –

- right-clicking your mouse, and selecting Paste.

D – Cloud Base or Outlook!



If you wish to use the Cloud base graphics courtesy of Bashewa Weather <http://www.bashewa.com> (read all about it at www.weather-watch.com/smf/index.php/topic,39180.315.html) you will need to change the `$useCloudImg` to true and it will replace the outlook in the top right column with the image. Be aware, this will add some extra space to the whole first row as the image is taller than the normal rows height! (NOTE: because the width is so wide, you must change the **width to 90** in the `ajaxWDwx.js` if you are not using my version of that file!)



If you do not wish to use the Cloud base graphics, you will display the Outlook for the next day as the original script used. You will also add the cloud height reading to column 2 in the Outside Now section since it wouldn't be available from the cloud height graphic.



WARNING: IF YOU SET MORE THEN ONE TO TRUE OR ALL TO FALSE, YOU WILL HAVE ONE SCREWED UP DISPLAY!

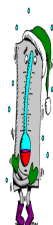
AUTOMATIC DATE FORMATTING (New in Version 6.90):

One thing that always bothered me was that the dates in Weather Display were all in many different formats. I counted at least 12 different formats for just the alternative dashboard script in English, if you use another language there are more! In the config file, you just need to choose the two ways you want the date to appear on your site, the long date (25-DEC-2013) and the Short Date (25-DEC). Here are the options:

```
$RecDateF   = '2';    // Set to desired date format for Record High/Low Dates
                // 1 = Dec-25-2013
                // 2 = 25-Dec-2013
                // 3 = 25/12/2013
                // 4 = 12/25/2013
                // 7 = 12-25-2013
                // 8 = 25-12-2013

$ShortDateF  = '6';    // Set format of Month and Day only formats
                // 5 = Dec-25
                // 6 = 25-Dec
```

ADDITIONAL SETTINGS TO MAKE THINGS WORK:



- Set the temperature to switch from cooling to heating degree days display. Script defaults to 65 which is equal to 65°F or 18.33°C. **\$coolVal = '65'**

- Lightning detector mode is set with **\$use1WIR** and **\$useNEX**. Set **\$use1WIR** to true if you have a 1-wire lightning detector and set **\$useNEX** to true if you use NexStorm. Set both to false if you don't have a lightning detector.



For USA Stations, if you get your all time record temperatures from Weather Underground, you must set **\$useWU** to **true**. (See below to Setup WU in Weather Display).

ICN:19 ISS:Ok CON:4.2 RCP:96%



Vantage Pro Status is seen at the bottom of the last row, column 3. ISS:Ok is the remote unit's battery, CON:4.2 means console batter voltage is 4.2V and RCP:96% means reception is 96% of all packets are received. To disable this, set **\$useVPst** to **false**. (Icn:19 is the Current Conditions Icon Number)

WU forecast: Chance of Rain. Partly Cloudy. High: 17 °C . Wind NE 36 km/h .
Chance of precipitation 20% (trace amounts).

VP2 Weather Station Prediction: Increasing clouds with little temp. change.
precipitation possible within 24 to 48 hrs.

The Vantage Pro Station Forecast:

If you wish to turn this feature off set **\$useVPfc** to **false**

NWS Short Term Weather Forecast							
Tonight	Wednesday	Wednesday Night	Thursday	Thursday Night	Friday	Friday Night	Saturday
							
Tstms Likely Lo 52 °F Hi 69 °F	Chance Tstms Lo 59 °F Hi 69 °F	Breezy Lo 44 °F Hi 65 °F	Mostly Sunny Lo 47 °F Hi 65 °F	Partly Cloudy Lo 47 °F Hi 72 °F	Chance Tstms Lo 51 °F Hi 72 °F	Chance Tstms Lo 51 °F Hi 69 °F	Slight Chc Tstms Lo 51 °F Hi 69 °F

Short Term Weather Forecast Option:

If you wish to turn this feature off, set **\$useEXTf** to **false**

Edit the values based on the settings needed for your country and needs. These settings will NOT affect any other pages you may have; they are just for this one.

Updated: 10/28/2013 @ 7:52:36 pm (9 sec ago)

Conditions Forecast / Storm Prediction

Display Update time in 24 hour format:

Edit ajaxWDwx3.js using notepad.exe or other

NON Word processor (No Word or Excel etc.) As follows:

Edit ajaxWDwx3.js around line 1855.
Change the code from:

Code:

```
set_ajax_obs("ajaxntime" , WDDt.date("g:i a")); // 2:37 pm  
set_ajax_obs("ajaxntimes" , WDDt.date("g:i:s a")); // 2:37:07 pm  
set_ajax_obs("ajaxntimes2" , WDDt.date("g:i:s a")); // 2:37:07 pm
```

to:

Code:

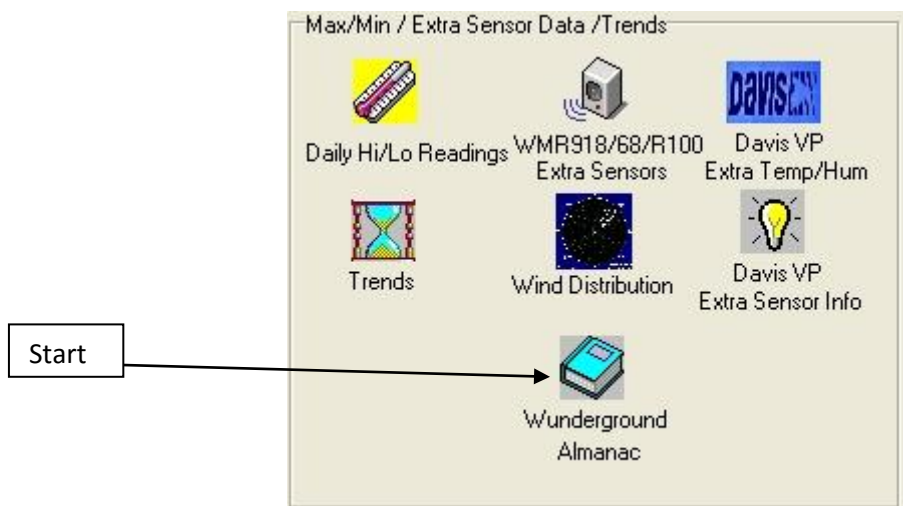
```
set_ajax_obs("ajaxntime" , WDDt.date("H:i")); // 14:37  
set_ajax_obs("ajaxntimes" , WDDt.date("H:i:s")); // 14:37:07  
set_ajax_obs("ajaxntimes2" , WDDt.date("H:i:s")); // 14:37:07
```

Now dashboard time is on 24h format.

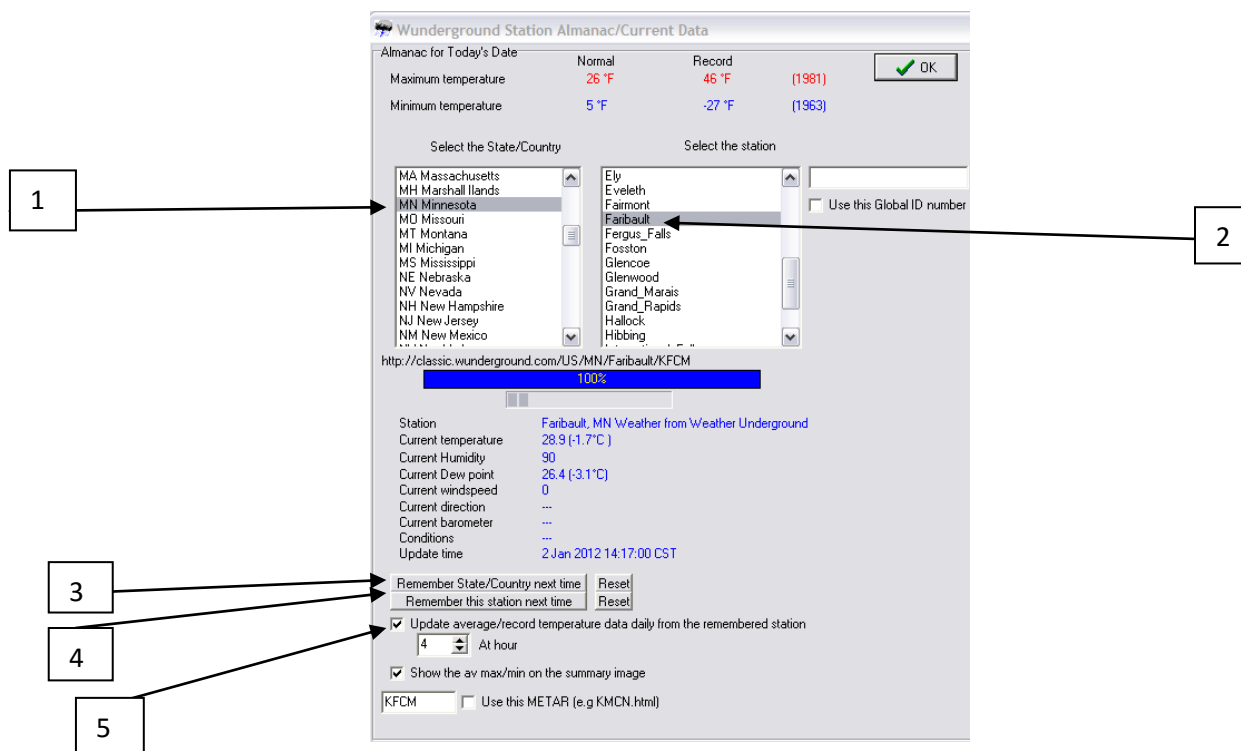
Thanks to Alessandro (i_fiorentino) for wxforum.net for this tip!

WEATHER UNDERGROUND DAILY RECORDS SETUP

You can skip this section if you aren't using the Weather Underground daily record temperatures option. To use the Weather Underground Records, you must setup the correct Site in Weather Display. Click on **View Menu in Weather Display**, then in the View menu, in the center of the screen, click on Wunderground almanac



Next Setup your state and closest NWS reporting site from the menu



Using Weather Underground is not currently available outside the USA as far as I know. If you can't use it, be sure to set the tag to "false" in the **AltAjaxDashboardConfig6.php** config file.

NOTE: Dates are automatically set to your **M/D/Y** or **D/M/Y** format by the setting for **WDdateMDY** that is located in the **Settings.php** file. If this is set incorrectly for your date format, the dates on the form will be future dates or really screwed up. Check there if they are!

If you are not using the CSS Theme Switcher Version 1.19 or later (Available from Mike Challis at www.642weather.com/weather/scripts/css-theme-switcher.zip) you must edit your CSS file(s) to add in the new CSS values. Specific instructions for doing this are included in the file **CSS Additions.txt**. If you don't add these changes, your text will be oversized and there will be no column/row outline, section outlines and other formatting will be missing. These CSS changes will work with all the Burnsville Weather Live scripts. (NOTE: Last check, these files were not including all the CSS mods for the Hi/Low/Avg script so you may need to manually add those. Instructions are included in the **CSS Additions.txt** file)

FREE for use on any site with acknowledgement

Once you have everything working, I ask that you keep the link to my site at the bottom of the script. You may remove the link if you donate anything for the script via PayPal or if you give a donation to any local food shelf!! Either way, I would appreciate an entry in your links section. My site is: **www.BurnsvilleWeatherLIVE.com** you can inset the following code to make it clickable:

```
<a href="http://www.Burnsvilleweatherlive.com">BurnsvilleWeatherLIVE.com</a>
```

If you have any comments, suggestions or need help, you can email me at **scott@Burnsvilleweatherlive.com**. I will try to help as much as possible. Please note: This script is freely given as is, with no guarantee of any kind. No guarantee of support, it working on your system or it doing anything good at all! (I had a guy chew my butt because he spent a few hours trying to get it to work and couldn't so he wanted me to fix it immediately! If he had read these instructions, he would have had it up and running in seconds, all his issues were spelled out here! LOL)

Thank You!

Scott

Special thanks to: **Ken True** at www.saratoga-weather.org for the great Ajax scripts and adding support for my alternative dashboard into his archive, **Mike Challis** at www.642weather.com for his great CSS theme switcher and **Brian (Windy)** at www.weather-display.com for the great Weather Display software and all his time and efforts in helping others make great sites! **Gerald (gwwilk)** Additional thanks to Rainer for his updated java script for the live updates used in this version, John (jgillett) for some well timed fixes to nagging problems and **Michael** at relayweather for the AQI RSS Script.

<http://www.relayweather.com>

Additional Hats-Off to **Piet from Sauwerd, Nederland** for his assistance testing the international date script changes, **Simon (Bashy)** and **Jim (Jmar)** from the Weather-display forum for helping to test this script with non-USA formats!! Thanks to **Ken True** again for helping with a few sticky problems that I just couldn't figure out, his help has been invaluable through-out this project. Thanks to anyone else I may have missed, there have been so many that have helped test and make suggestions that I couldn't possibly have done this without you all!

One of the things I like about the people I've gotten to know on FXforum.net's Forum is that everyone there seems to want to help. I can't say thank you enough to those there that take the time to answer questions and share their code, scripts, ideas and humor. If you have the ability, I hope you will consider sharing your time or talents with the people there too!

F.A.Q.'s -----

If you run into errors, look here first:

Red X's instead of images

Depending on who you got your images for UV, Moon, Fire, etc they may be in a different format (.gif, .jpg or .png) and they may be capitalization issues, the most common is the UV graphics. Here is what I expect to see:

```
UV Graphics:    Default is UV#.gif  (No leading 0 and lowercase .gif)
Solar:          Default is SI#.gif  (No leading 0 and lowercase .gif)
Chandler Fire: Default is Fire#.gif (Only F cap and lowercase .gif)
```

If you use a different format, you will need to edit BOTH ajax-dashboard6.php and ajaxWDwx-settings.js to display the correct case and format!

The box for rain/snow under the windrose graphic is blank (ie: no image or text)

You don't have a unit of measure for snow set in settings.php It should look like this around line #143:

```
$SITE['uomRain'] = ' in';      // =' mm', =' in'
$SITE['uomSnow'] = ' cm';      // =' cm', =' in'    <--- Add this line
```

The text is the wrong size and there are no boxes around the reading. You MUST edit your CSS files and add in the new CSS classes. See the instructions in the file CSS Additions.txt that comes in the zip file.

Almost all the items are blank or wrong.

You aren't using the latest version of testtags.txt (Version 1.07 or later AND have added the additional tags from the text file in the archive) or it just hasn't been uploaded to your website yet. You also must have your Weather Display configured to upload this file properly. If you are running the original ajax-dashboard, this should already be working, if you don't have the original ajax-dashboard, this package will NOT work for you!!!

Having trouble with the size of the Current Image or Wind Rose Images?

There are several possible solutions posted in the WD forum about where and how to change this. Look at instruction item #11 first, Use this link: <http://www.weather-watch.com/smf/index.php/topic,37938.0.html> for more info

Text Size and Style doesn't look right in some places. If you have modified the Data1 CSS code to include a font size, this may cause problems with some parts of the form because I don't account for the size being changed in the CSS. You may have to modify the code to fix it.

Several columns and tables are all messed up and out of place. Re-read the instructions. MANY SECTIONS have multiple options; you can NOT make them all TRUE because they occupy the same spot on the display. If you try, it screws up the whole display!

Change in Hours of Sunlight not functioning correctly. The WD hours of possible day/sun light value is calculated as the time during which there is measurable solar radiation - which is why the lat/long needs to be set correctly in the part of the program that makes the solar calculations

Edits to the testtags.txt file seem to disappear. If you are using Windows 7 it has been reported that the work around is to edit the file in c:/wdisplay/testtags.txt file instead. Within a few minutes it is moved to the correct location and the edits will stick.

Unable to display the ajaxWDwx3.js. If you did not properly update your site to the new version 3 scripts from Ken's site, specifically top.php, header.php, menubar.php and footer.php which the old version still calls the standard ajaxWDwx.js. These 4 scripts that need to be changed to update to version 3 of Ken's script. See Ken's instructions on how to update!